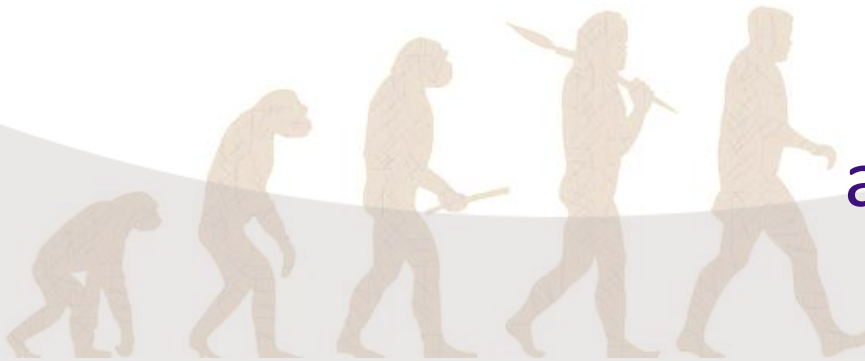


LIFT-TEK
ELECAR **MASTS**
Lift Technologies 



The evolution of
pedestrian transpallet :
2m-wide mast
application for 7 ton load



Project requirement

```
graph TD; A[Project requirement] --> B[Mast and attachment]; A --> C[Transpallet features]; B --> D[Structural analysis to validate and optimise weight and geometry]; C --> D; D --> E[LIFT-TEK ELECAR MASTS Lift Technologies];
```

Mast and attachment

- Load capacity >7 ton
- Load COG circa 1m
- Mast width circa 2m
- Synchronous fork positioner
- Integrated Sideshift
- Attachment with custom-made connection for the application

Transpallet features

- The mast is thought to be used for low lift heights and offers the operator a comfortable usage and easy handling

Structural analysis to validate and optimise weight and geometry



Specs

Single stage
(MONO) mast

ISS

Synchronous Pin-
Type Positioner
with connected
attachment

Unusual mast width,
load capacity and
COG for transpallet
application

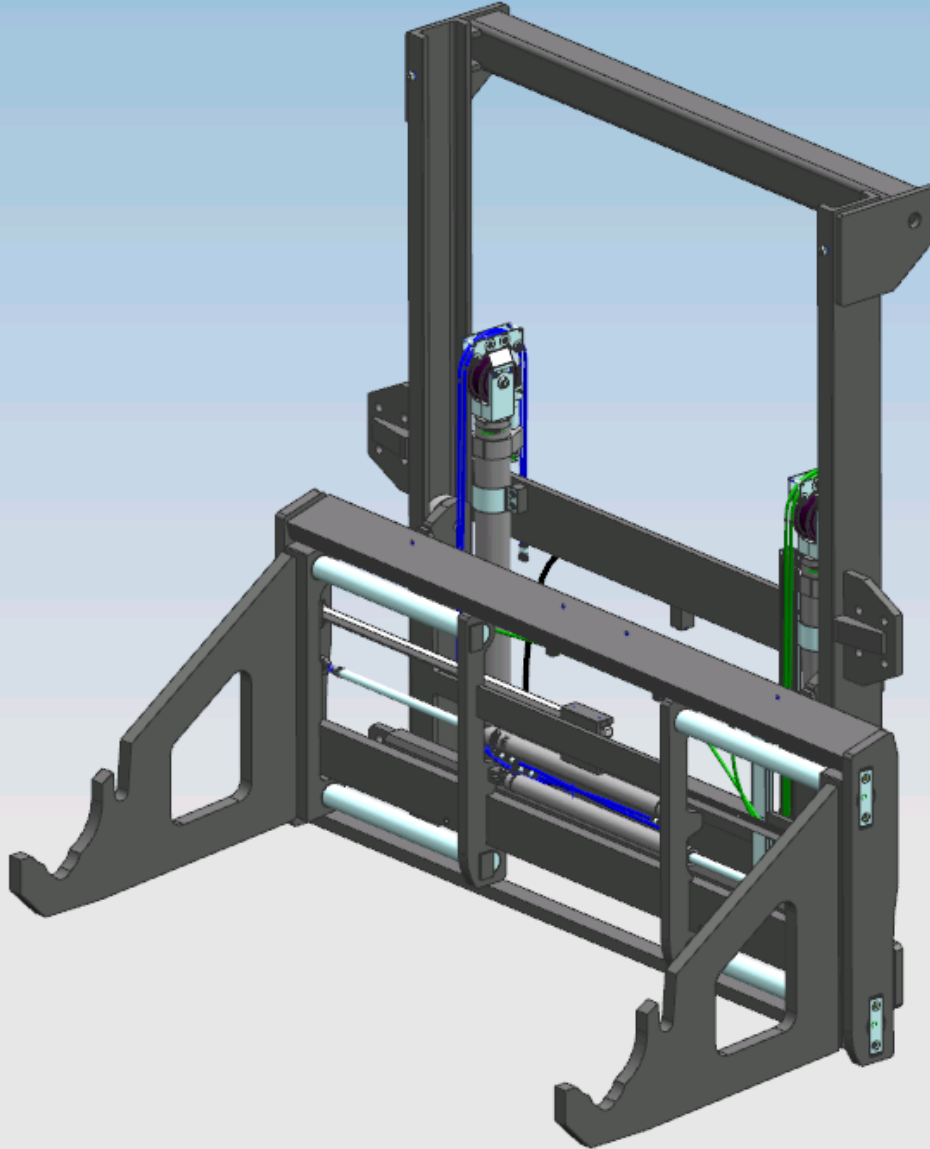
Our technical approach



Design

Validation of the
structural choices
through FEM analysis

Constructive original
solutions to overcome
the production
difficulties typically
encountered when
machining and
processing large
widths



[Check out our website to have a full overview of our product range and to customise this solution for your requirements]



www.lift-tekelecar.it/en

The best solution for your masts

LIFT-TEK
ELECAR **MASTS**
Lift Technologies 